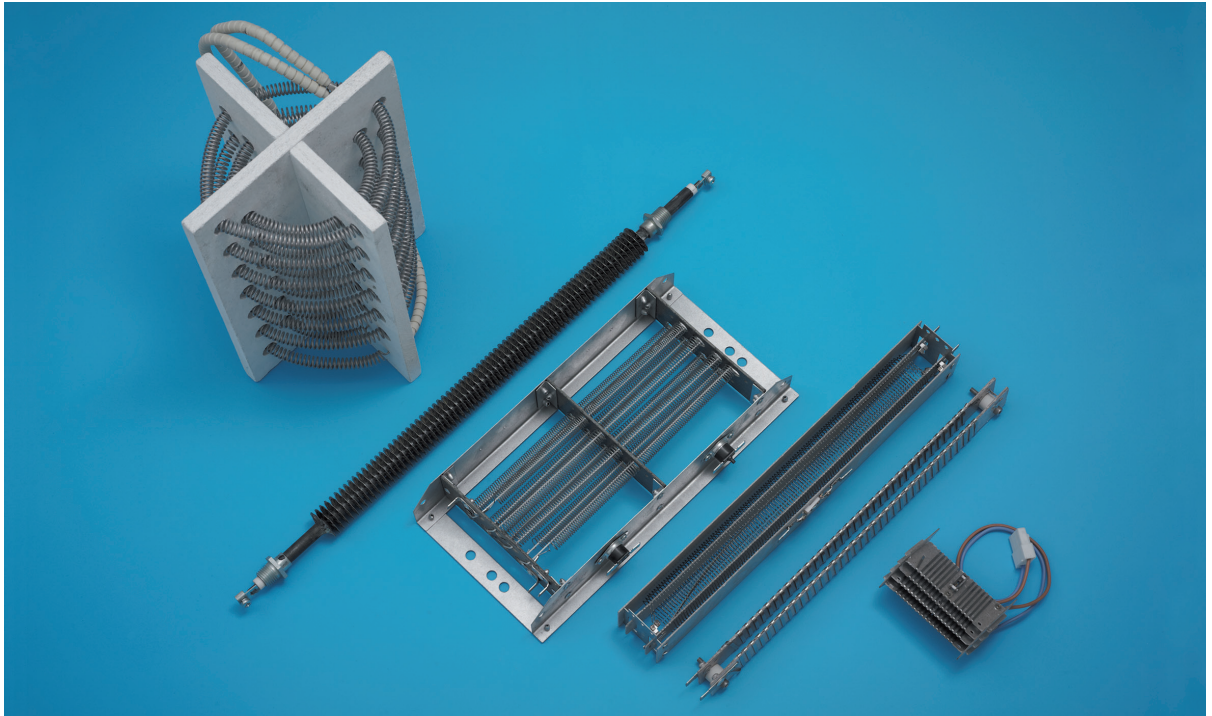


# AIR HEATING ELEMENTS



**BOMAC** produce air heating elements manufactured to individual customer requirements. The heating alloy, either flat tape or coiled wire is suspended between insulating supports, made of ceramic or mica laminate.

Depending on the type of application, elements can be fitted with thermal cut-out devices for overheat protection and temperature control. These can be self resetting or self-hold types. Thermal fuses can also be fitted

## Typical Applications for air heating elements are:

- Hand dryers
- Fan heaters
- Convector heaters
- Tumble dryers
- Over door curtains
- Plinth heaters
- Space heaters
- Industrial process heaters