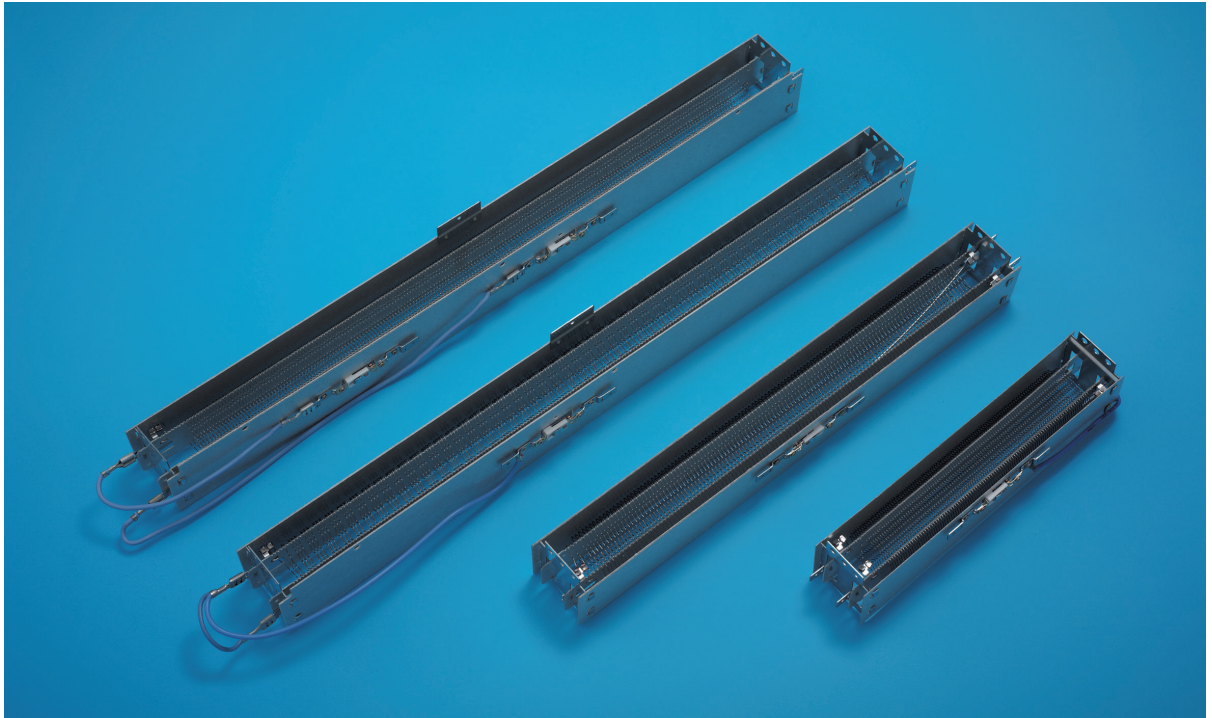


TANGENTIAL BLOWER ELEMENTS



Formed wire elements provide a cost effective and highly efficient solution to forced air heating applications.

Bomac offers a standard range of sizes and power outputs. Elements can also be manufactured to meet special requirements to include alternative lengths and mounting details.

The design allows for optimum positioning of thermal overhear protection cut-outs, providing close thermal coupling. Thermal cut-outs may be integrated as either auto re-setting or PTC self hold, mounted at one end or top centre. A variety of terminal and lead wire options are available.

STANDARD SIZES	
Fan rotor length, mm	Ratings
180	2 x 1kW
240	2 or 3kW
300	2 or 3kW
360	2 or 3kW
420	3 or 4.5kW

Typical applications:

- Fan heaters
- Fuel effect fires
- Over door air curtains
- Plinth heaters